



Keybridge House, 80 Miles Street
London SW8

GARTONJONES.COM

Keybridge House, 80 Miles Street London, SW8

£575 Per Week

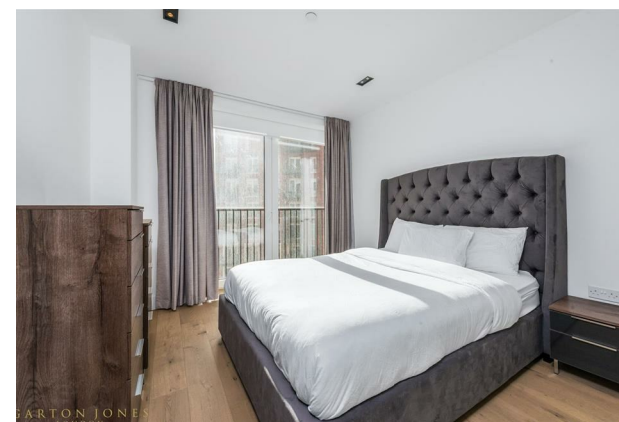
A spacious 1-bedroom apartment available to rent in Keybridge House comprising 600sq.ft (57sqm). This well-designed apartment has an open plan reception room, smart integrated kitchen, large bedroom with good storage and a luxury bathroom suite. Residents enjoy 24-hour concierge service, state of the art gymnasium, 15 metre swimming pool and the Keybridge Club Lounge. Conveniently located for all the shopping and transport services of Vauxhall, KeyBridge is also moments away from the new Nine Elms Northern Line Tube Extension, providing easy access into Central London. The local amenities of Sainsbury's Superstore, Restaurants at St George Wharf and an Italian Patisserie located across from Vauxhall Park are all available on your doorstep, as is the major regeneration of Nine Elms with brand-new prestigious restaurants and bars and is quickly growing to be London's trendiest hotspot.

- 600sq.ft (57sq.m)
- 1 Bedroom
- Luxury Bathroom Suite
- Open Plan Reception
- Balcony
- 24 Hour Concierge
- Swimming Pool & Gym
- Moments from Vauxhall & Nine Elms Tube Stations
- Bright and Spacious
- Lambeth Council Tax Band E

GARTON JONES.COM

9 Albert
Embankment
London
SE1 7SP

Lettings:
+44 (0) 20 7735 1888
nineelms@gartonjones.com
www.gartonjones.com



KEYBRIDGE HOUSE

	SQ FT	SQ M
TOTAL AREA	606	56.3

